

Denby Starling

From: Denby Starling <donotreply@golfgenius.com>
Sent: Friday, December 13, 2019 2:05 PM
To: denby.starling@gmail.com
Subject: WHS TIPS TO KNOW #4-LIMIT ON UPWARD MOVEMENT OF A HANDICAP INDEX/LOW HANDICAP INDEX



Golfers,

While there is no limit on how low your Handicap Index can go, under WHS there WILL be a limit to how much your Handicap Index can go up over any 365 day period. This limit will be based on your **Low Handicap Index**.

The **Low Handicap Index** represents the demonstrated ability of a player over the 365 day period preceeding the day on which the most recent score in their scoring record was played. In layman's terms it is your **lowest Handicap Index** over the 365 days preceeding the day you shot your current score and serves as a reference point against which your current *Handicap Index* (best 8 of your last 20 differentials) will be compared. Your **Low Handicap Index** is reevaluated every time you submit a new score and will be displayed in your scoring record.

The **Low Handicap Index** will be used to determine two trigger points that could affect the calculation of your *Handicap Index*.

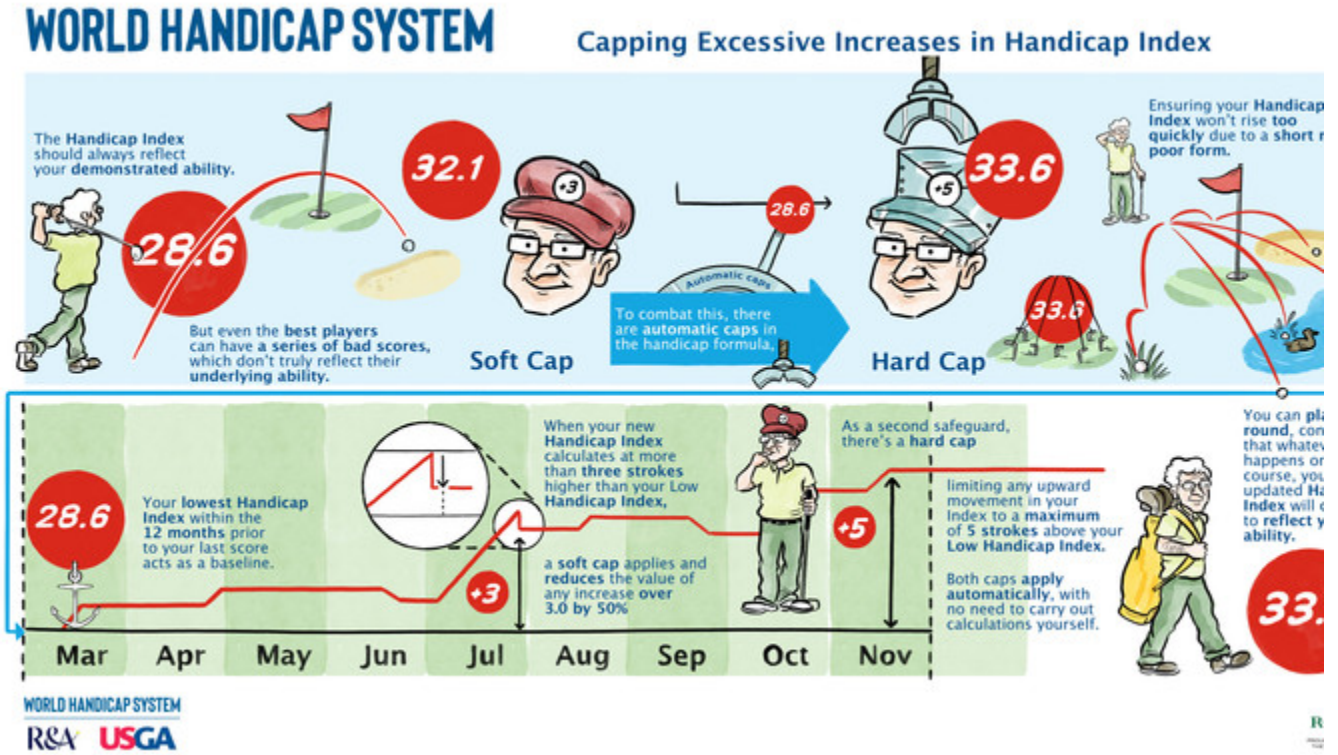
- Soft Cap-If the difference between your newly calculated *Handicap Index* and your **Low Handicap Index** reaches 3.0 strokes, any further increase is limited to 50% of the amount over 3.0 strokes.
- Hard Cap-If, after a *soft cap* has been applied, your newly calculated *Handicap Index* exceeds your **Low Handicap Index** by 5.0 or greater strokes, your *Handicap Index* will be limited to 5.0 strokes above your **Low Handicap Index**

This adjustment takes place automatically and adjusts as required every time you post a score. There are some unique circumstances that can arise if you have long gaps between rounds, so if you see something that looks amiss in your record that is driven by this adjustment, reach out to your Handicap Chair. The USGA Summary Sheet for this new Rule is

attached. For those of you who want to understand how the math will work, I have attached a couple of examples from the VSGA presentation.

Best,
Denby

KMGA Handicap Chair
denby.starling@gmail.com



Attachments:

- [USGA_Cap_Change_Summary.pdf](#)
- [Soft_and_Hard_Caps.pdf](#)

